
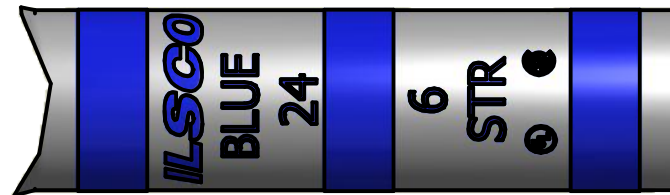
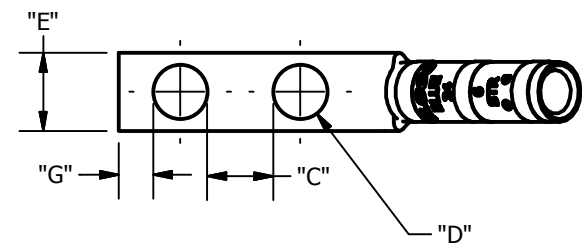
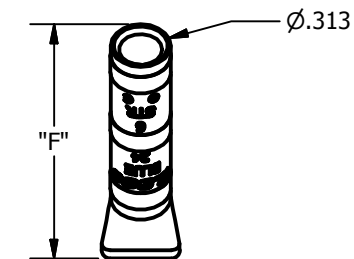
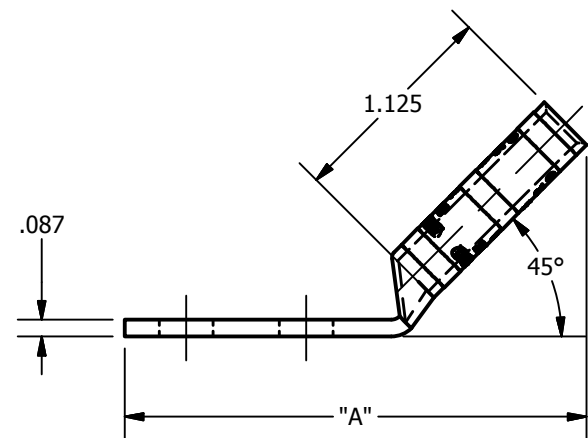


SCREW: NONE	MATERIAL: COPPER	REV: J	 800-776-9775 www.ilSCO.com
CAT. NO.: SEE CHART	PLATING: EL-TIN	DRAWN BY:DW SCALE: NTS	
INFORMATION SHEET:FORM 157	MARKING: SEE BELOW	DATE:6/3/2008 SIZE: B	
			DWG NO: Y0203-D-4
			SHEET: 1 OF 1



DETAIL C
INK MARK TOP & BOTTOM



CATALOG NUMBER	"A"	"C"	"D"	"E"	"F"	"G"	TANG MARKING
CLNB-6-10-12-4	2.363	0.281	0.219	0.440	1.200	0.148	UL, ILSCO, CSA, CLNB-6-10-12-4, 10 x 1/2, 6 STR, DIE 24
CLNB-6-10-58-4	2.363	0.406	0.219	0.440	1.200	0.148	UL, ILSCO, CSA, C-6-10-58, 10 x 5/8, 6 STR, DIE 24
CLNB-6-10-1116-4	2.363	0.468	0.219	0.440	1.200	0.148	UL, ILSCO, CSA, CLNB-6-10-1116-4, 10 x 11/16, 6 STR, DIE 24
CLNB-6-10-34-4	2.550	0.531	0.219	0.440	1.200	0.148	UL, ILSCO, CSA, CLNB-6-10-34-4, 10 x 3/4, 6 STR, DIE 24
CLNB-6-10-1-4	2.800	0.781	0.219	0.440	1.200	0.148	UL, ILSCO, CSA, CLNB-6-10-1-4, 10 x 1, 6 STR, DIE 24
CLNB-6-14-12-4	2.363	0.219	0.281	0.440	1.200	0.180	UL, ILSCO, CSA, CLNB-6-14-12-4, 1/4 x 1/2, 6 STR, DIE 24
CLNB-6-14-58-4	2.550	0.344	0.281	0.440	1.200	0.180	UL, ILSCO, CSA, C-6-14-58, 1/4 x 5/8, 6 STR, DIE 24
CLNB-6-14-34-4	2.550	0.469	0.281	0.440	1.200	0.180	UL, ILSCO, CSA, C-6-14-34, 1/4 x 3/4, 6 STR, DIE 24
CLNB-6-14-1-4	2.800	0.719	0.281	0.440	1.200	0.180	UL, ILSCO, CSA, CLNB-6-14-1-4, 1/4 x 1, 6 STR, DIE 24
CLNB-6-516-58-4	2.550	0.282	0.343	0.532	1.200	0.180	UL, ILSCO, CSA, CLNB-6-516-58-4, 5/16 x 5/8, 6 STR, DIE 24
CLNB-6-516-34-4	2.800	0.407	0.343	0.532	1.200	0.180	UL, ILSCO, CSA, CLNB-6-516-34-4, 5/16 x 3/4, 6 STR, DIE 24
CLNB-6-516-78-4	2.800	0.532	0.343	0.532	1.200	0.180	UL, ILSCO, CSA, CLNB-6-516-78-4, 5/16 x 7/8, 6 STR, DIE 24
CLNB-6-516-1-4	3.050	0.657	0.343	0.532	1.200	0.180	UL, ILSCO, CSA, CLNB-6-516-1-4, 5/16 x 1, 6 STR, DIE 24
CLNB-6-516-134-4	3.613	1.407	0.343	0.532	1.200	0.180	UL, ILSCO, CSA, CLNB-6-516-134-4, 5/16 x 1-3/4, 6 STR, DIE 24
CLNB-6-38-34-4	2.800	0.344	0.406	0.593	1.200	0.211	UL, ILSCO, CSA, CLNB-6-38-34-4, 3/8 x 3/4, 6 STR, DIE 24
CLNB-6-38-78-4	3.050	0.469	0.406	0.593	1.200	0.211	UL, ILSCO, CSA, CLNB-6-38-78-4, 3/8 x 7/8, 6 STR, DIE 24
CLNB-6-38-1-4	3.050	0.594	0.406	0.593	1.200	0.211	UL, ILSCO, CSA, CLNB-6-38-1-4, 3/8 x 1, 6 STR, DIE 24
CLNB-6-38-116-4	3.050	0.656	0.406	0.593	1.200	0.211	UL, ILSCO, CSA, CLNB-6-38-116-4, 3/8 x 1-1/6, 6 STR, DIE 24
CLNB-6-38-118-4	3.238	0.719	0.406	0.593	1.200	0.211	UL, ILSCO, CSA, CLNB-6-38-118-4, 3/8 x 1-1/8, 6 STR, DIE 24
CLNB-6-38-134-4	3.738	1.344	0.406	0.593	1.200	0.211	UL, ILSCO, CSA, CLNB-6-38-134-4, 3/8 x 1-3/4, 6 STR, DIE 24
CLNB-6-38-2-4	4.113	1.594	0.406	0.593	1.200	0.211	UL, ILSCO, CSA, CLNB-6-38-2-4, 3/8 x 2, 6 STR, DIE 24
CLNB-6-12-1-4	3.238	0.438	0.562	0.750	1.200	0.265	UL, ILSCO, CSA, CLNB-6-12-1-4, 1/2 x 1, 6 STR, DIE 24
CLNB-6-12-114-4	3.613	0.688	0.562	0.750	1.200	0.265	UL, ILSCO, CSA, CLNB-6-12-114-4, 1/2 x 1-1/4, 6 STR, DIE 24
CLNB-6-12-112-4	3.738	0.938	0.562	0.750	1.200	0.265	UL, ILSCO, CSA, CLNB-6-12-112-4, 1/2 x 1-1/2, 6 STR, DIE 24
CLNB-6-12-134-4	4.113	1.188	0.562	0.750	1.200	0.265	UL, ILSCO, CSA, CLNB-6-12-134-4, 1/2 x 1-3/4, 6 STR, DIE 24
CLNB-6-12-178-4	4.113	1.313	0.562	0.750	1.200	0.265	UL, ILSCO, CSA, CLNB-6-12-178-4, 1/2 x 1-7/8, 6 STR, DIE 24